
**MIDDLETON CITY COUNCIL
SPECIAL MEETING
JANUARY 30, 2024**

The Special Meeting of the Middleton City Council was called to order on January 30, 2024, at 2:07 p.m. by Mayor Jackie Hutchison.

Roll Call:

City Council: Council President Kiser and Council Members Christiansen, Murray were present at the beginning. Councilman O'Meara joined the meeting at 3:14 p.m.

Mayor Hutchison, City Attorney Ms. Yett, City Administrator Ms. Crofts, City Engineer Ms. Woodruff, Public Works Director Mr. Van Gilder, and Deputy Clerk Ms. Reynolds were present.

Information Item:


1. Municipal System Capacity Workshop, City Engineer and PW Director

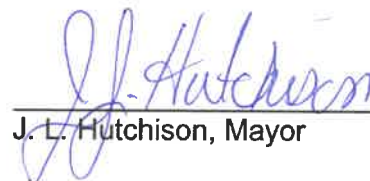
City Engineer Ms. Woodruff and Public Works Director Mr. Van Gilder presented information regarding the city wastewater and water capacity.

Discussion only, no decisions made, and no action taken.

Adjourn: Mayor Hutchison adjourned the meeting at 3:39 p.m.

ATTEST:


Jennica Reynolds, Deputy Clerk
Minutes Approved: February 7, 2024


J. L. Hutchison, Mayor



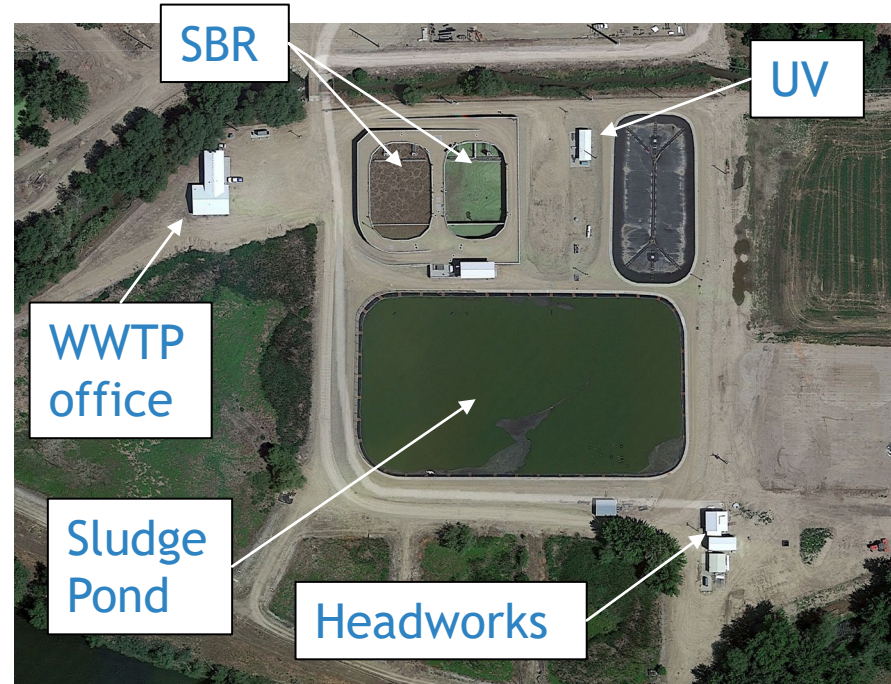
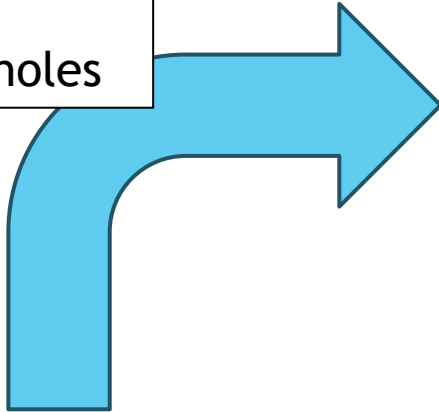
Wastewater and Water Status

City of Middleton

January 30, 2024

Existing Wastewater System

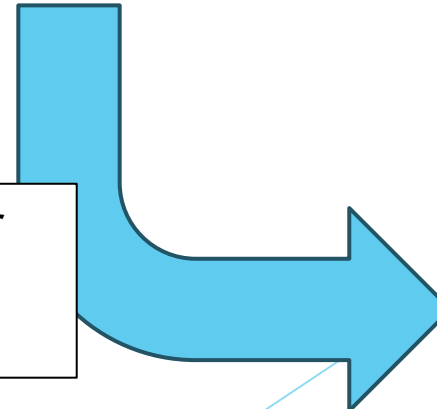
7 Lift Stations
~50 miles
~1,000 manholes



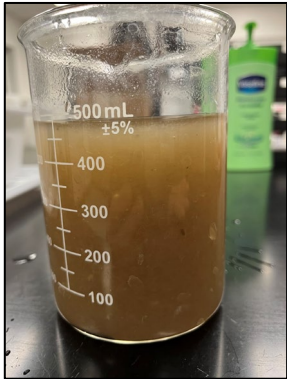
1999 Permit
*Expired in 2004
*Administratively Extended
Capacity 8,064 EDU
SBR System
*Upgraded from lagoons in
2013



Treated Wastewater
Discharged to Boise
River



Capacity: What is it?



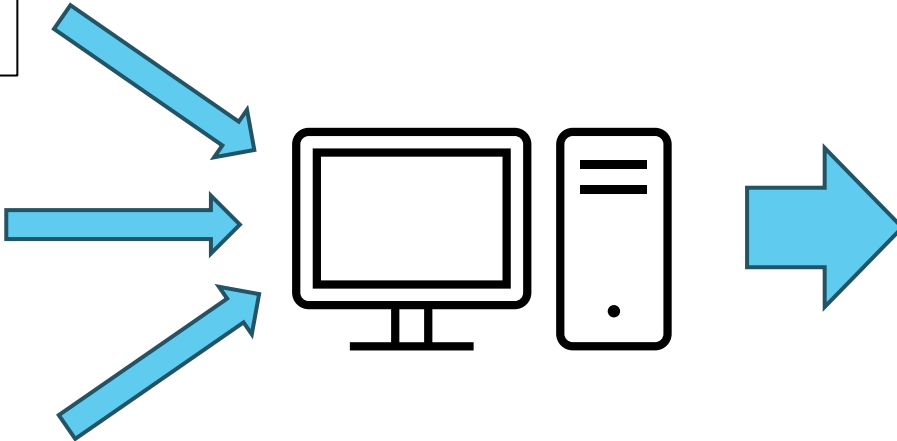
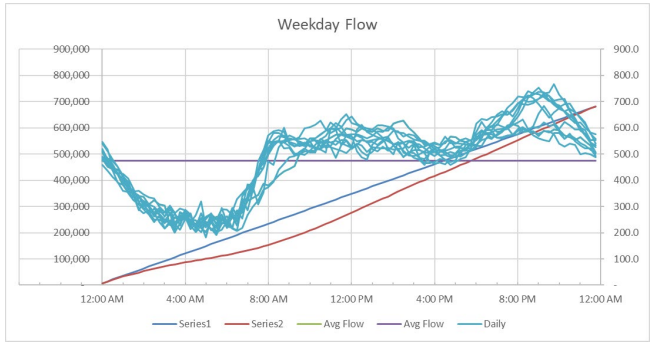
United States Environmental Protection Agency
Region 10
1200 Sixth Avenue
Seattle, Washington 98101

AUTHORIZATION TO DISCHARGE UNDER THE
NATIONAL POLLUTANT DISCHARGE ELIMINATION SYSTEM

In compliance with the provisions of the Clean Water Act, 33 U.S.C. §1251 et seq., as
amended by the Water Quality Act of 1987, P.L. 100-4, the "Act",

City of Middleton
15 North Dewey Avenue
Middleton, Idaho 83664

NPDES permit limits,
wastewater, flow,
temperature, SBR, UV,
weather



Equivalent Dwelling Units (EDU)

*how many homes can the City
provide services?

Background

2018

- EPA gave authority, or primacy, to DEQ for Idaho
- DEQ notifies City regarding status of IPDES permit (#2)
- City started moving forward with wastewater planning
 - Pilot Study, Mill Slough Water Quality Improvement, WWTP Planning

2019

- Wastewater Facility Plan completed
- WWTP rated at 1 MGD

2020

- COVID
- Significant growth

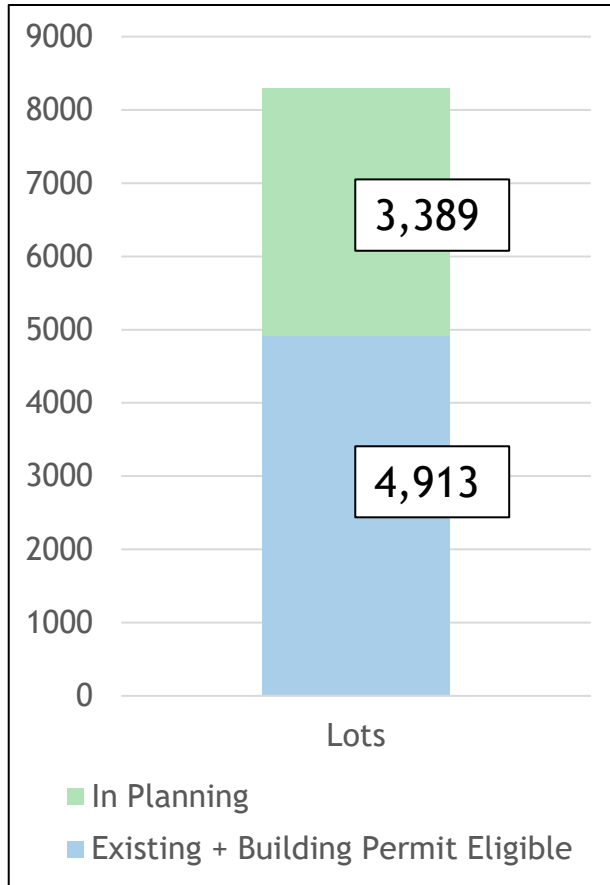
2021

- WWTP flows increasing above 1 MGD
- WWTP re-rated to 1.5 MGD and 5,882 EDU
- City aggressively mitigates for infiltration and inflow, remove Piccadilly park, proactively plan for new WWTP

2022

- WWTP re-rated to 2.1 MGD and 8,064 EDU

Planning



~400 Permits/Year
(max)

8 Years

Historical
Growth

~250 Permits/Year
(min)

12.5 Years



WWTP Solution In Place

*New IPDES Permit must be issued

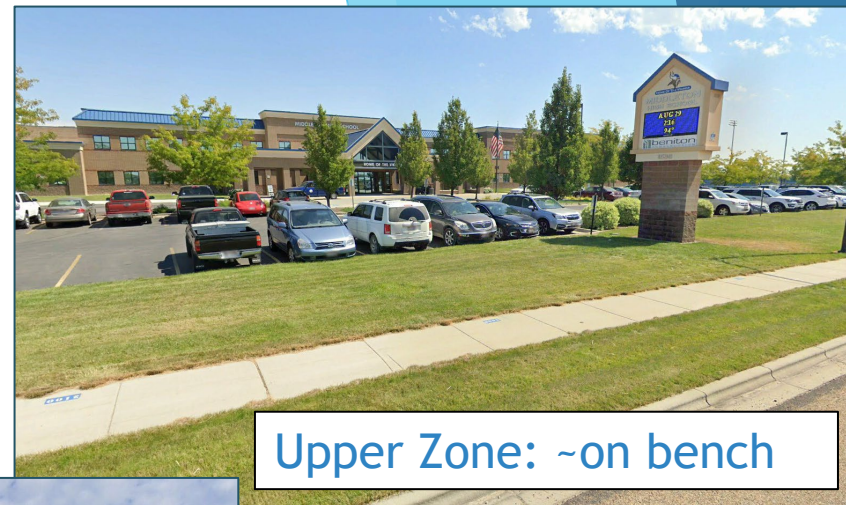
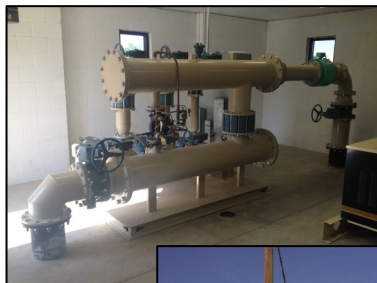
**Must meet IPDES Permit limits

***Capacity for planning period

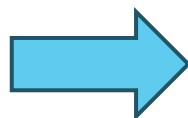
Wastewater Next Steps

- ▶ Annexations
- ▶ Rate Study: Monthly use fee
- ▶ Connection Fee: Equity buy in to the existing system
- ▶ Funding for Future Upgrade
 - ▶ Grants
 - ▶ Savings
 - ▶ Bond/Loan

Existing Water System



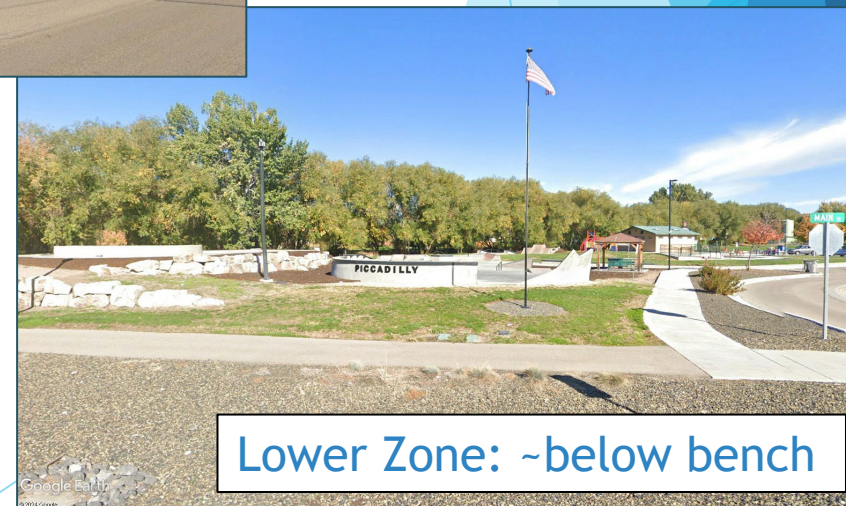
Upper Zone: ~on bench



East Pressure Zone: ~east of Duff



6 Wells
1 Reservoir
2 Booster Stations
2 Intertie Stations
~65 miles
Fire Hydrants

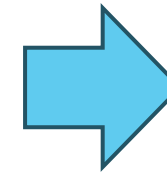
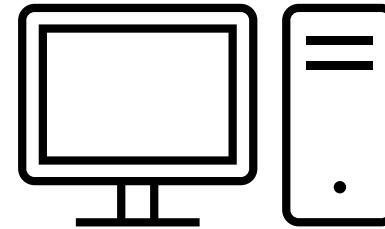
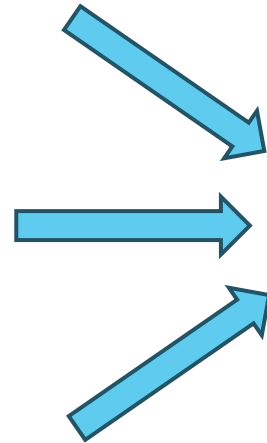


Lower Zone: ~below bench

Capacity: What is it?



Drinking Water Rules, well flow, storage volume, generators, well out-of-service scenarios, pressure zones, water use, fire flow



Equivalent Dwelling Units (EDU)

*how many homes can the City provide services?

**Entire system

***Per zone

IDAPA 58 – DEPARTMENT OF ENVIRONMENTAL QUALITY
Drinking Water Protection and Finance Division
58.01.08 – Idaho Rules for Public Drinking Water Systems



Background

2015

- Well No. 7 added to system (increase capacity)

2018

- Well No. 10 added to system for Fire Flow protection (increase fire flow capacity)

2019

- Well No. 4 generator installed (increase capacity)

2020

- Falcon Valley Booster Station added to system (increase capacity and fire flow capacity)
- East Pressure Zone created

2022

- Water Facility Plan completed

2023

- Interties optimized to transfer water from Upper to Lower zone (increase capacity)

Planning

Water Conservation @ Parks

*utilize surface water resource



Efforts:

*Conservation

**Tracking

***Improving Flow between Zones

Optimize Intertie Stations

*Maximize water transfer from Upper to Lower zones

Improvement	Description
1	Leak Survey (meter connections)
2	5,200-LF 12-in Pipe from Bass Ln to Donna Dr
3	1,800-LF 12-in Pipe in S 4th Ave from Main St to Donna Ln
4	Convert Well 6 to potable supply
5	Backup generator for Well 8
6	Backup generator for Well 6
7	Cemetery Rd (from W Concord St. to Middle School)
8	Hartley Ln PRV Station
9	Emmett Rd PRV Station
10	Summit Ave.
11	Meadow Ct.
12	W 4th St N
13	N 7th Ave W
14	Cedar St (aka W 5th St N)
15	6th St / Duke Ave. / 4th St
16	Wiffin Ln.
17	Kennedy Dr. to N Dewey Ave.
18	S Middleton Rd. (from E Idaho Rd. to Star Rd.)
19	W 2nd St N (from Jasper Ave. to N Viking Ave.)
20	Integrate Well 10 into potable supply operations.
21	Establish Fire Flow Policy
22	Develop and Implement Conservation Plan

Capital Improvement Plan

*from Facility Plan

Water Next Steps

- ▶ Annexations
- ▶ EDU analysis
- ▶ Rate Study: Monthly use fee
- ▶ Connection Fee: Equity buy in to the existing system
- ▶ Funding for Future Upgrades
 - ▶ Grants
 - ▶ Savings
 - ▶ Bond/Loan