

		Magnitude		
		(Low) 1	(Medium) 2	(High) 3
Frequency	(Low) 1	Riot/Demonstration/Civil Disobedience		Communicable Disease Terrorism Dam Failure
	(Medium) 2	Landslide	Extreme Cold Drought Severe Winter Storms	Earthquake River/Stream Flooding
	(High) 3	Extreme Heat Tornado West Nile Virus	Flash Flood Lightning Hail Burrowing Rodents Straight Line Wind	Hazardous Materials Structural Fire Wildfire Canal/Drainage Failure

Canyon County Hazard Severity Ranking

## Mitigation Overview

The Canyon County Multi-Jurisdiction All Hazard Mitigation Plan was formally adopted by the County in June 2006, and was updated and approved by FEMA Region 10 in 2013. It contains information relative to the hazards and vulnerabilities facing Canyon County. The jurisdictions participating in the Plan include Canyon County and the Cities of Nampa, Caldwell, Middleton, Notus, Parma, Wilder, Greenleaf, and Melba.

The Multi-Jurisdiction All Hazard Mitigation Plan (AHMP) seeks to identify the County's and city's hazards, and understand their impact on vulnerable populations and infrastructure. With that understanding, the Plan sets forth solutions that if implemented, have the potential to significantly reduce threat to life and property. The Plan is based on the premise that hazard mitigation works! With increased attention to managing natural hazards, communities can reduce the threats to citizens and through proper land use and emergency planning avoid creating new problems in the future. Many solutions can be implemented at minimal cost and social impact.

There are several mitigation projects identified in the AHMP that if successfully implemented will reduce risks within the County. The projects were prioritized in the AHMP.

The AHMP is reviewed annually and revised every five years. The revision will include an update on the status of all mitigation actions taken during the previous five years.

## Planning Assumptions & Considerations

The Canyon County Emergency Operations Plan (EOP) is based on the planning assumptions and considerations presented in this section.

- The responsibility for preparedness and response lies first with individual citizens, second families, third local jurisdiction, and finally, Canyon County.

The Canyon County Emergency Management Coordinator has responsibility for management of the entire emergency management program within the County, and can make routine decisions regarding the updating of planning and preparedness tools. Decisions regarding response can be made within the limits of disaster authority. During emergency operations, the Coordinator should ensure that all parties are working in a concerted, integrated, and supportive effort to overcome the disaster. Supporting functions have been combined into six (6) coordinating functions or core teams. The Core Team Leaders are responsible for organization and coordination of their functions as presented in the Plan.

**Fire & Rescue Services**

ESF #4 Firefighting  
ESF #9 Search and Rescue  
ESF #10 Oil and Haz Mat

**Communications**

ESF #2 Communications  
ESF #15 External Affairs

**Civil Services**

ESF #1 Transportation  
ESF #3 Public Works & Engineering  
ESF #12 Energy

**Health Care**

ESF #6 Mass Care, Emergency Assistance, Housing & Medical  
ESF #8 Public Health & Medical Services  
ESF #11 Agriculture & Natural Resources

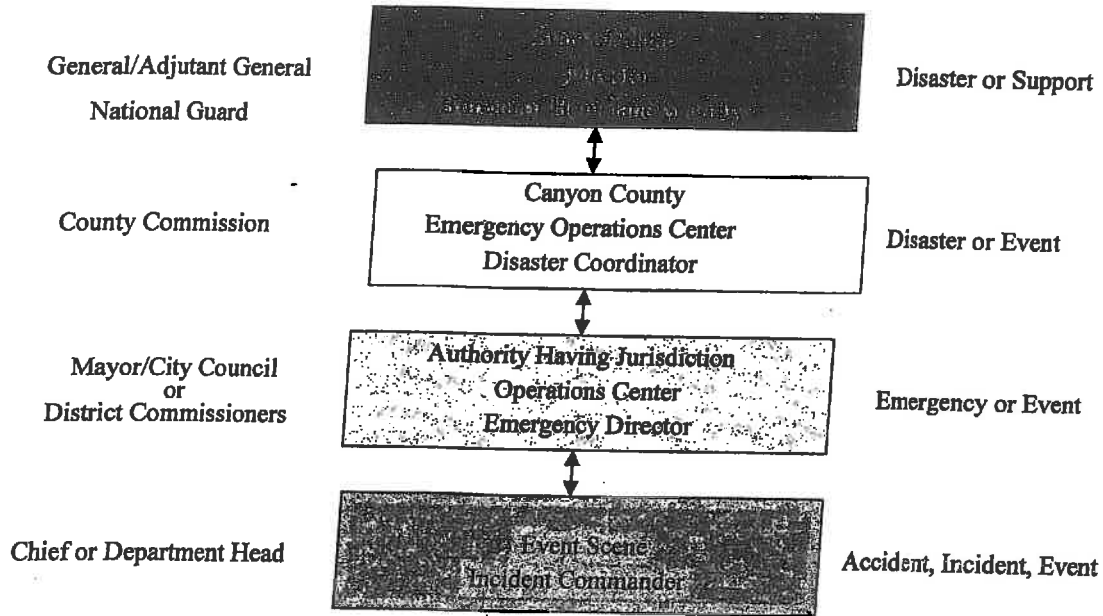
**Public Security**

ESF #13 Public Safety & Security  
ESF #16 Military Support

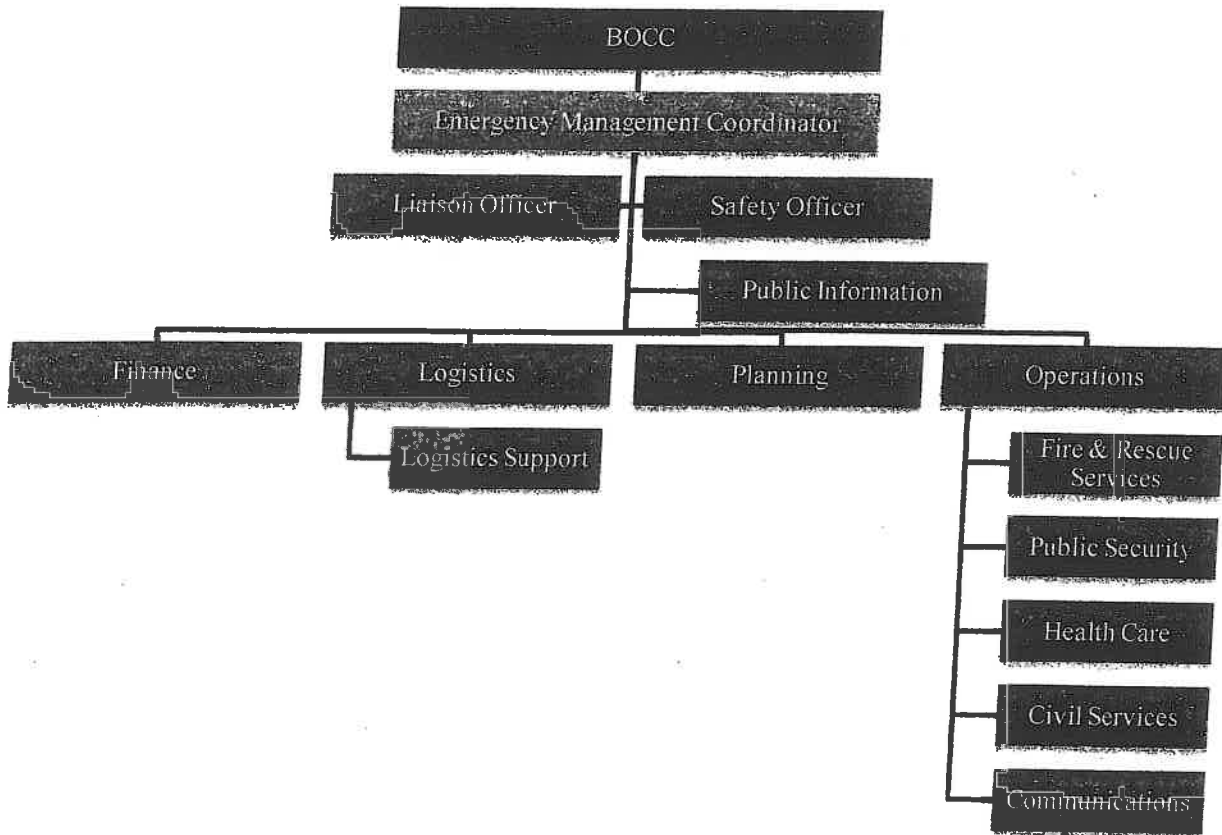
**Logistics Support**

ESF #5 Emergency Management  
ESF #7 Logistic Management  
ESF #14 Long Term Recovery

The following flow chart illustrates the relationship between the Canyon County Emergency Response groups and the State of Idaho. It should be noted that the National Incident Management System (NIMS) is the fundamental response concept of all layers of response within Canyon County and the State of Idaho.



The Canyon Emergency Operations Center (EOC) will be staffed according to the ICS structure above. The following roles and responsibilities can be used as checklists during EOC activation.



## Disaster Declaration Process

The provisions of this plan are applicable, but not limited, to all disasters that requires a Disaster Declaration by the County in support of local emergency activities and requests for disaster assistance will be made in accordance with the following procedures:

### City

1. Emergency responders from the Cities will respond to an emergency within their city limits and coordinate activities in accordance with their standard operating procedures and mutual aid agreements.
2. When an emergency situation is or is likely to be beyond the scope of control of the City, the mayor or city council may proclaim an emergency. Their proclamation of emergency, and any requests for assistance, should be forwarded to the Canyon County Emergency Management Coordinator in an expedient manner, i.e., by voice followed by hard copy.
3. When a local emergency has been proclaimed, the mayor will govern by proclamation, and has the authority to impose all necessary regulations to preserve the peace and order of the city.

### Canyon County

1. Upon receipt of the proclamation of a local emergency, the Canyon County Chairman of the Board of County Commissioners will:  
Provide available assistance requested to contain the incident (i.e., sheriff, public works, health, etc.).  
Notify the Idaho Bureau of Homeland Security that a situation exists which may require the declaration of a County disaster.
2. In the event a situation exists in the unincorporated portions of the County that may affect lives and property, the County will take necessary measures to bring the situation under control, utilizing all County government resources.
3. If the situation, either in an incorporated or unincorporated portion of the County is, or has the potential to be, beyond the capability and resources of the County to control, the chairman of the board of County Commissioners may declare a local disaster in accordance with Idaho Code 46-1011.
4. The Canyon County Emergency Management Coordinator will notify the Idaho BHS that the County has declared a disaster emergency, and that the County has implemented its Emergency Operations Plan. The notification should also state that the County has committed all available County resources to the response. If

State supplemental assistance is needed to assist the County's response effort, the type of assistance should be clearly stated. The declaration and request for State assistance may be provided orally, and then submitted in writing to the Idaho Bureau of Homeland Security. *(See Declaration Form below)*

5. The IBHS Director will evaluate the County's request for assistance and brief the Adjutant General and the Governor of the situation.