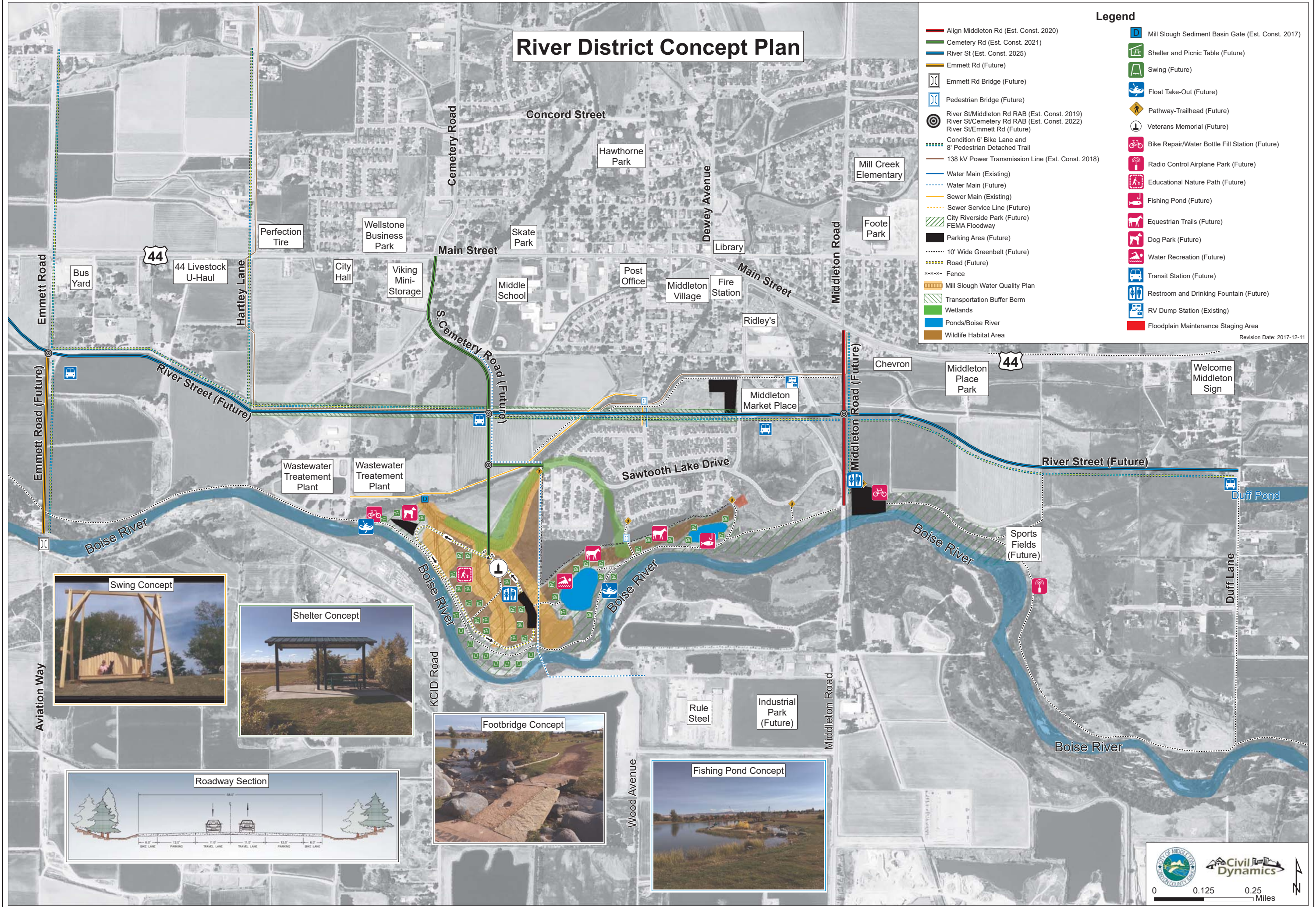


# River District Concept Plan

- ### Legend
- Align Middleton Rd (Est. Const. 2020)
  - Cemetery Rd (Est. Const. 2021)
  - River St (Est. Const. 2025)
  - Emmett Rd (Future)
  - Emmett Rd Bridge (Future)
  - Pedestrian Bridge (Future)
  - River St/Middleton Rd RAB (Est. Const. 2019)
  - River St/Cemetery Rd RAB (Est. Const. 2022)
  - River St/Emmett Rd (Future)
  - Condition 6' Bike Lane and 8' Pedestrian Detached Trail
  - 138 kV Power Transmission Line (Est. Const. 2018)
  - Water Main (Existing)
  - Water Main (Future)
  - Sewer Main (Existing)
  - Sewer Service Line (Future)
  - City Riverside Park (Future)
  - FEMA Floodway
  - Parking Area (Future)
  - 10' Wide Greenbelt (Future)
  - Road (Future)
  - Fence
  - Mill Slough Water Quality Plan
  - Transportation Buffer Berm
  - Wetlands
  - Ponds/Boise River
  - Wildlife Habitat Area
  - Mill Slough Sediment Basin Gate (Est. Const. 2017)
  - Shelter and Picnic Table (Future)
  - Swing (Future)
  - Float Take-Out (Future)
  - Pathway-Trailhead (Future)
  - Veterans Memorial (Future)
  - Bike Repair/Water Bottle Fill Station (Future)
  - Radio Control Airplane Park (Future)
  - Educational Nature Path (Future)
  - Fishing Pond (Future)
  - Equestrian Trails (Future)
  - Dog Park (Future)
  - Water Recreation (Future)
  - Transit Station (Future)
  - Restroom and Drinking Fountain (Future)
  - RV Dump Station (Existing)
  - Floodplain Maintenance Staging Area

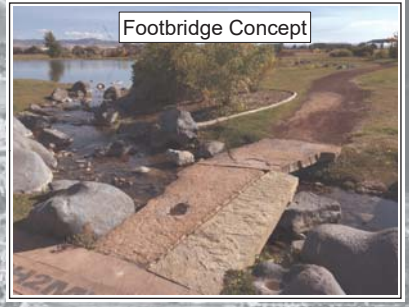
Revision Date: 2017-12-11



Swing Concept



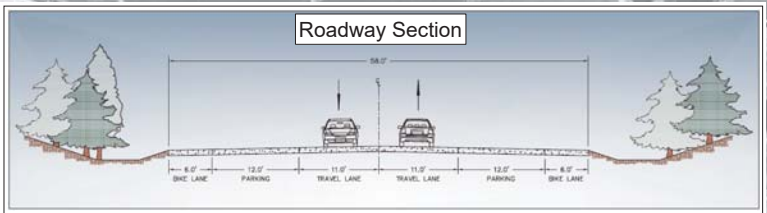
Shelter Concept



Footbridge Concept



Fishing Pond Concept



Roadway Section

0 0.125 0.25 Miles