

What is Middleton River Walk?

Middleton River Walk will be a comprehensive planned activity center for the community of Middleton.



The approximately six mile walking path will wind through residential, commercial and park development.

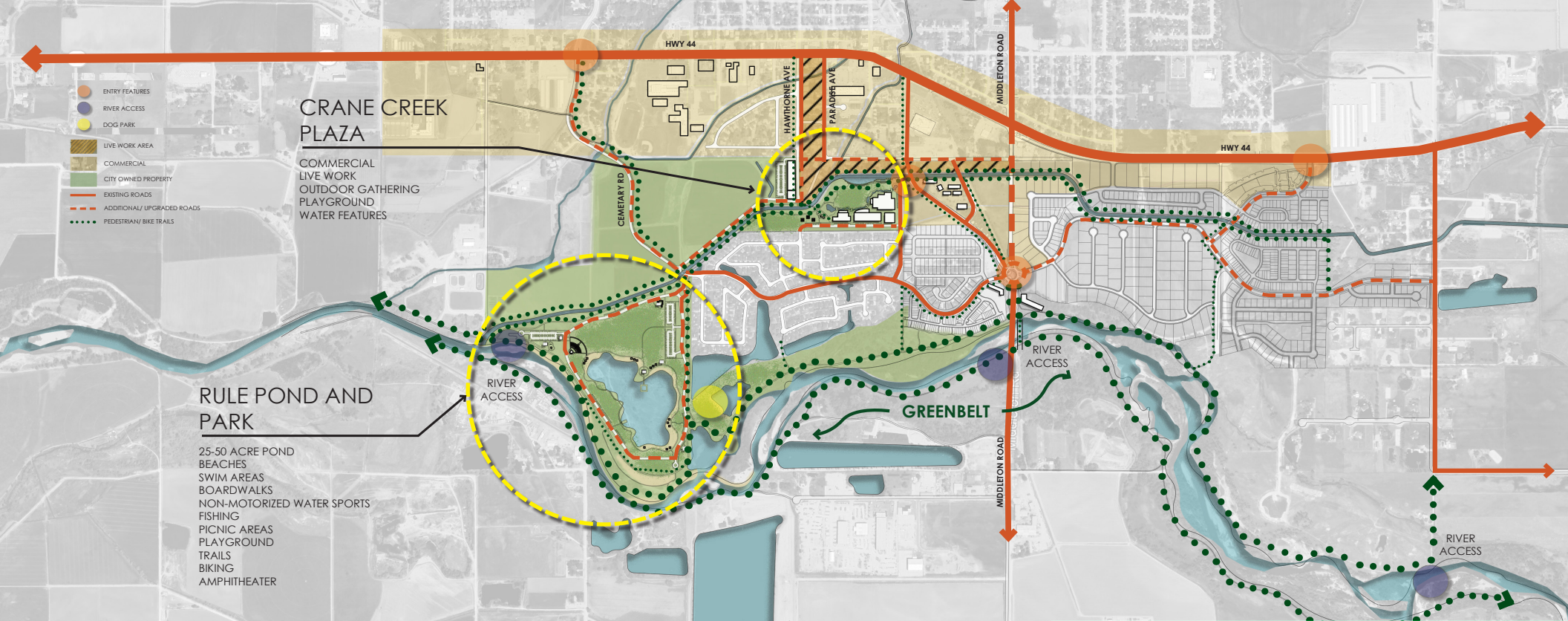
Imagine being able to splash at the beach, fish on the dock, float the river, walk your dog, and enjoy the natural beauty of the Boise River! Commercial development in Crane Creek Plaza creates a gathering spot for the community to enjoy restaurants, retail and outdoor gatherings with music, fun and entertainment.



Everyone is invited!

Workshops are being planned for February 2022 for community ideas and input. The City will post the dates and times on Facebook and in the Gazette.

City of Middleton
River Walk District
Concept Plan

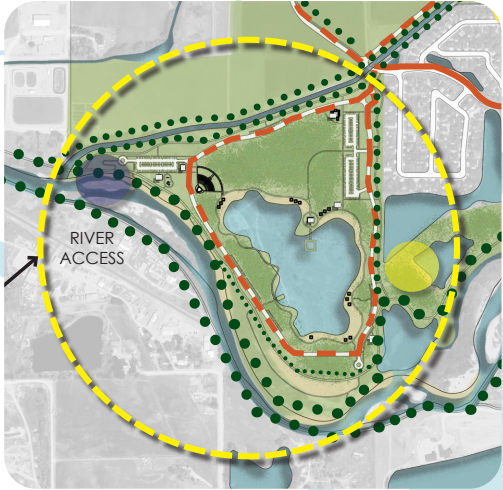


RULE POND AND PARK

- 25-50 ACRE POND
- BEACHES
- SWIM AREAS
- BOARDWALKS
- NON-MOTORIZED WATER SPORTS
- FISHING
- PICNIC AREAS
- PLAYGROUND
- TRAILS
- BIKING
- AMPHITHEATER

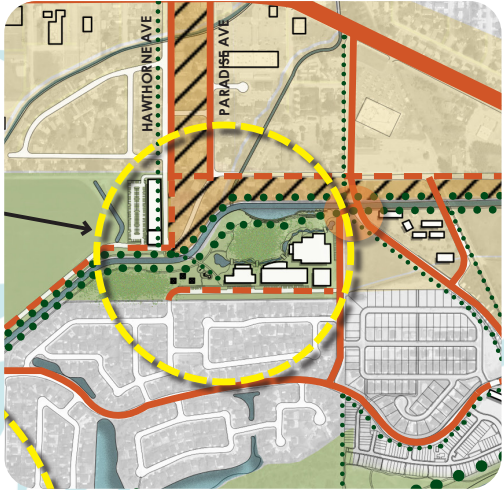
CRANE CREEK PLAZA

- COMMERCIAL
- LIVE WORK
- OUTDOOR GATHERING
- PLAYGROUND
- WATER FEATURES



Rule Pond and Park

Approximately 98 acres of natural and developed recreational spaces to include beaches, walking paths, fishing, picnic areas, swimming, biking, amphitheater, a wave water feature, open sports spaces and more!



Crane Creek Plaza

Opportunities for mixed use, outdoor gatherings, entertainment, restaurant and retail. An important pivot point between the City and the Boise River.

The River Walk District meets the goal of the “Middleton Connects” vision to enhance walkability, health and livability in Middleton by creating interesting places and experiences that will educate, entertain and connect the community of Middleton.

Middleton’s sense of community is enriched with a pathway system that connects neighborhoods to schools, parks and downtown, and invites walking and biking to promote a healthy lifestyle.