

## CITY APPLICATION TO AMEND COMPREHENSIVE PLAN MAPS

City is requesting that the State Highway 44 Alternate Bypass be added to the following Comprehensive Plan Maps: (1) Transportation, Schools & Recreation Map, (2) Transit Map, (3) Functional Classification Map and (4) Future Acquisitions Map.

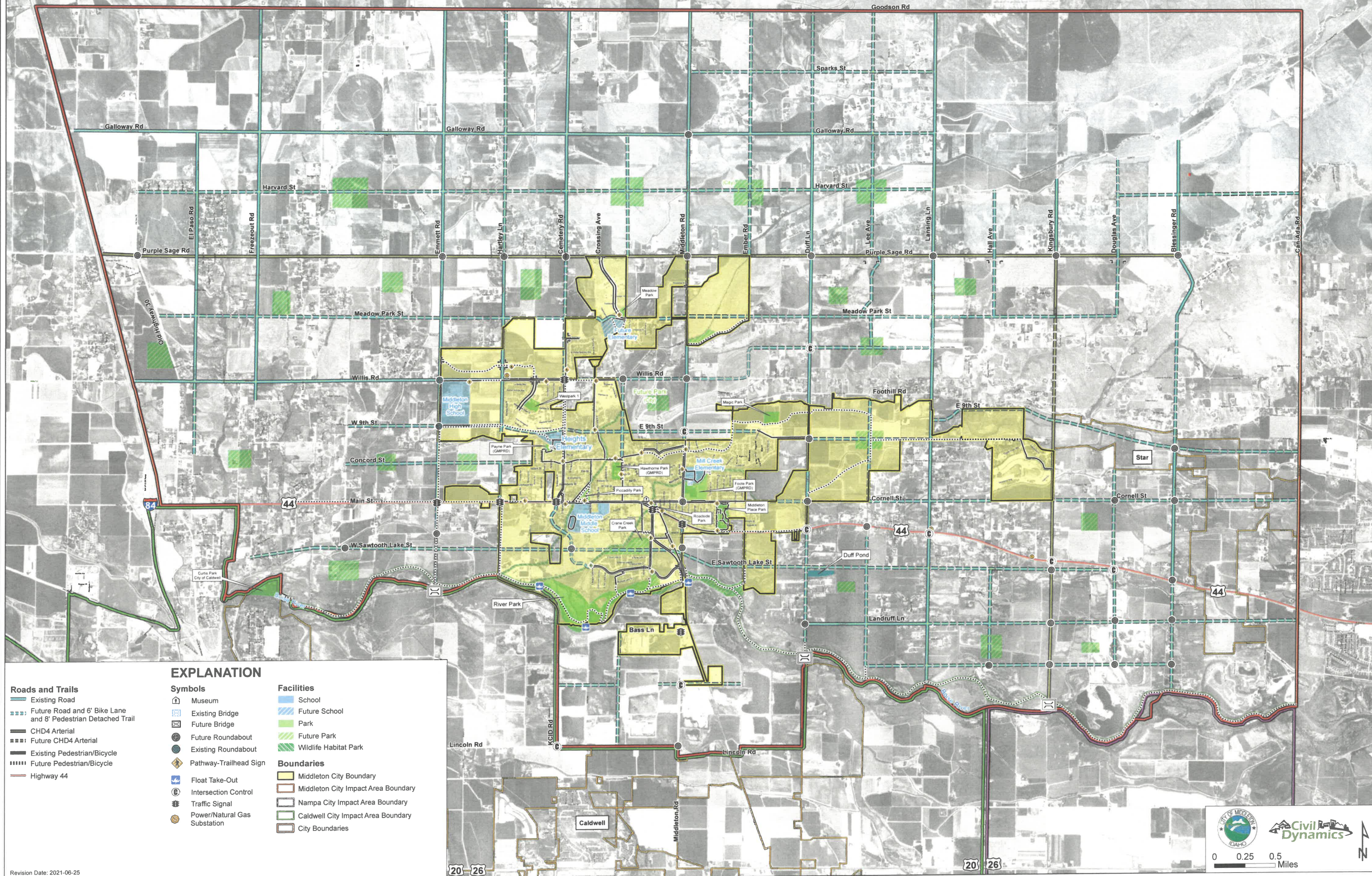
Attached as Exhibits "A", "B", "C" and "D", respectively, are the current, proposed, and alternate versions of the (1) Transportation, Schools & Recreation Map, (2) Transit Map, (3) Functional Classification Map and (4) Future Acquisitions Map.

EXHIBIT A

Current, Proposed and alternate Transportation, Schools & Recreation Map

# City of Middleton Transportation, Schools and Recreation Map

AREA OF IMPACT PENDING  
CANYON COUNTY APPROVAL

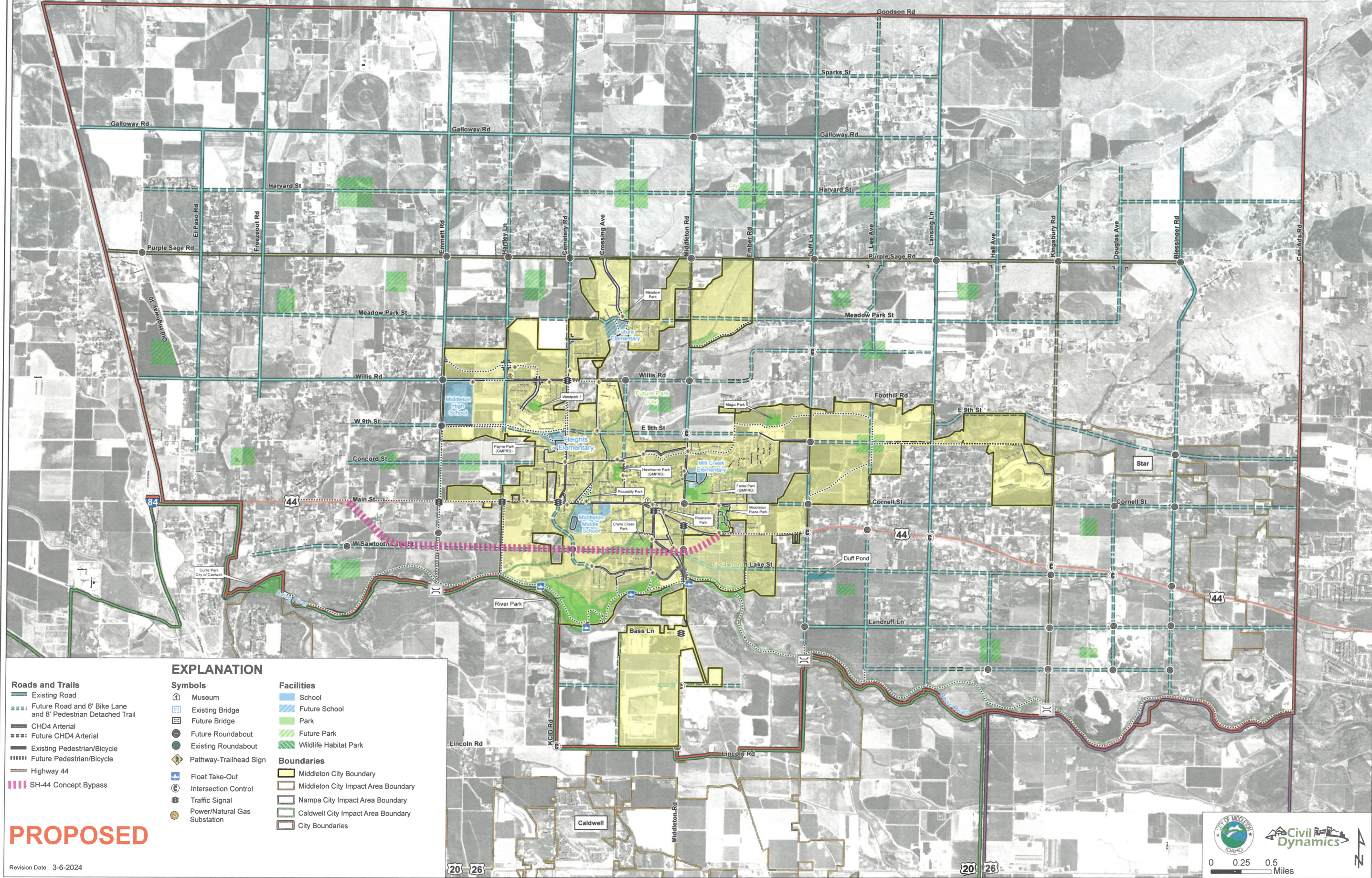


**EXPLANATION**

<p><b>Roads and Trails</b></p> <ul style="list-style-type: none"> <li> Existing Road</li> <li> Future Road and 6' Bike Lane and 8' Pedestrian Detached Trail</li> <li> CHD4 Arterial</li> <li> Future CHD4 Arterial</li> <li> Existing Pedestrian/Bicycle</li> <li> Future Pedestrian/Bicycle</li> <li> Highway 44</li> </ul>	<p><b>Symbols</b></p> <ul style="list-style-type: none"> <li> Museum</li> <li> Existing Bridge</li> <li> Future Bridge</li> <li> Future Roundabout</li> <li> Existing Roundabout</li> <li> Pathway-Trailhead Sign</li> <li> Float Take-Out</li> <li> Intersection Control</li> <li> Traffic Signal</li> <li> Power/Natural Gas Substation</li> </ul>	<p><b>Facilities</b></p> <ul style="list-style-type: none"> <li> School</li> <li> Future School</li> <li> Park</li> <li> Future Park</li> <li> Wildlife Habitat Park</li> </ul> <p><b>Boundaries</b></p> <ul style="list-style-type: none"> <li> Middleton City Boundary</li> <li> Middleton City Impact Area Boundary</li> <li> Nampa City Impact Area Boundary</li> <li> Caldwell City Impact Area Boundary</li> <li> City Boundaries</li> </ul>
---	--	--

# City of Middleton Transportation, Schools and Recreation Map

**AREA OF IMPACT PENDING  
CANYON COUNTY APPROVAL**



**EXPLANATION**

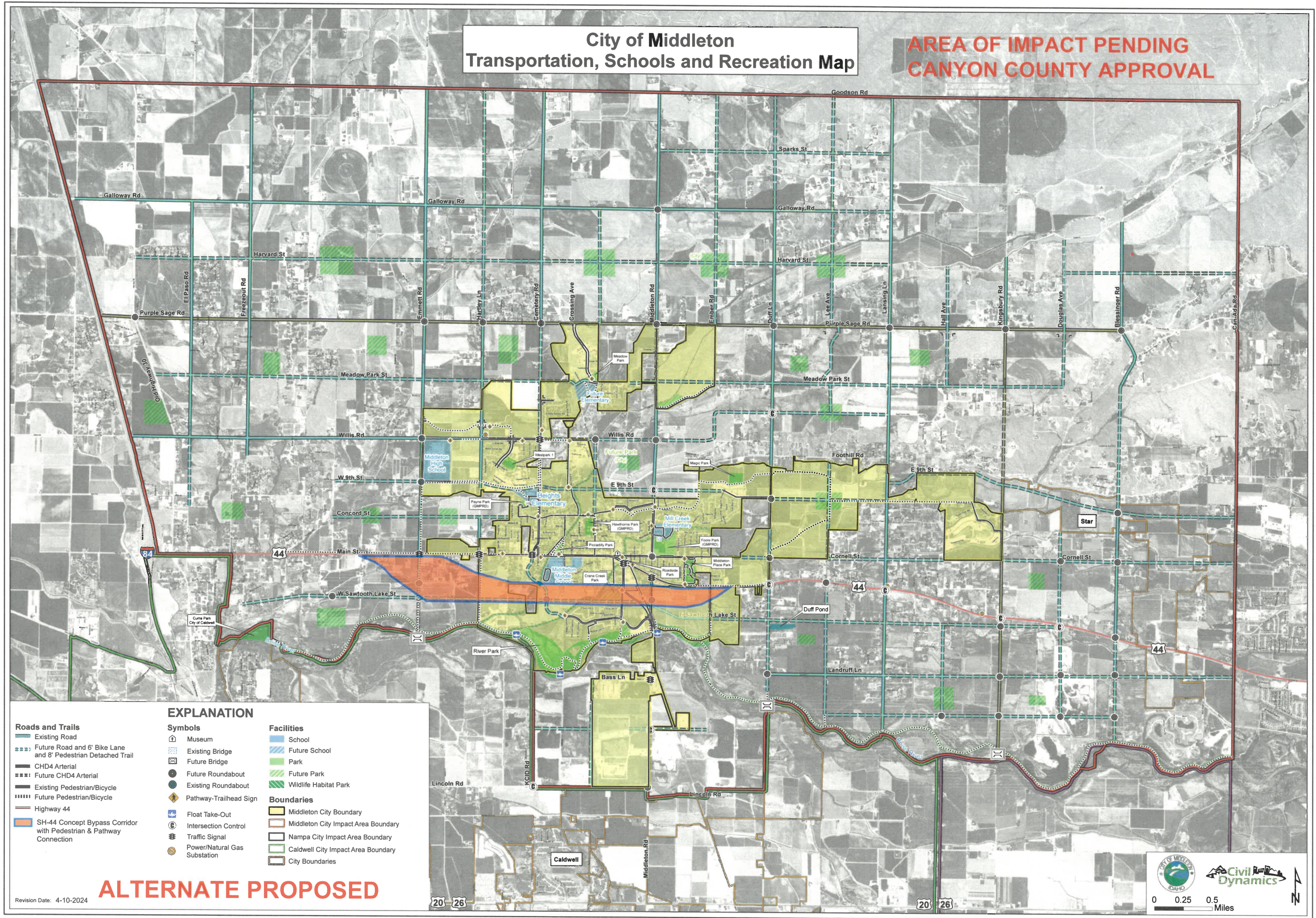
<p><b>Roads and Trails</b></p> <ul style="list-style-type: none"> <li> Existing Road</li> <li> Future Road and 6' Bike Lane and 8' Pedestrian Detached Trail</li> <li> CHD4 Arterial</li> <li> Future CHD4 Arterial</li> <li> Existing Pedestrian/Bicycle</li> <li> Future Pedestrian/Bicycle</li> <li> Highway 44</li> <li> SH-44 Concept Bypass</li> </ul>	<p><b>Symbols</b></p> <ul style="list-style-type: none"> <li> Museum</li> <li> Existing Bridge</li> <li> Future Bridge</li> <li> Future Roundabout</li> <li> Existing Roundabout</li> <li> Pathway-Trailhead Sign</li> <li> Float Take-Out</li> <li> Intersection Control</li> <li> Traffic Signal</li> <li> Power/Natural Gas Substation</li> </ul>	<p><b>Facilities</b></p> <ul style="list-style-type: none"> <li> School</li> <li> Future School</li> <li> Park</li> <li> Future Park</li> <li> Wildlife Habitat Park</li> </ul> <p><b>Boundaries</b></p> <ul style="list-style-type: none"> <li> Middleton City Boundary</li> <li> Middleton City Impact Area Boundary</li> <li> Nampa City Impact Area Boundary</li> <li> Caldwell City Impact Area Boundary</li> <li> City Boundaries</li> </ul>
--	--	--

**PROPOSED**

Revision Date: 3-6-2024

# City of Middleton Transportation, Schools and Recreation Map

**AREA OF IMPACT PENDING  
CANYON COUNTY APPROVAL**



### EXPLANATION

- |  |  |   |
|--|--|---|
| <b>Roads and Trails</b><br>Existing Road<br>Future Road and 6' Bike Lane and 8' Pedestrian Detached Trail<br>CHD4 Arterial<br>Future CHD4 Arterial<br>Existing Pedestrian/Bicycle<br>Future Pedestrian/Bicycle<br>Highway 44<br>SH-44 Concept Bypass Corridor with Pedestrian & Pathway Connection | <b>Symbols</b><br>Museum<br>Existing Bridge<br>Future Bridge<br>Existing Roundabout<br>Future Roundabout<br>Pathway-Trailhead Sign<br>Float Take-Out<br>Intersection Control<br>Traffic Signal<br>Power/Natural Gas Substation | <b>Facilities</b><br>School<br>Future School<br>Park<br>Future Park<br>Wildlife Habitat Park<br><b>Boundaries</b><br>Middleton City Boundary<br>Middleton City Impact Area Boundary<br>Nampa City Impact Area Boundary<br>Caldwell City Impact Area Boundary<br>City Boundaries |
|--|--|---|

**ALTERNATE PROPOSED**

Revision Date: 4-10-2024

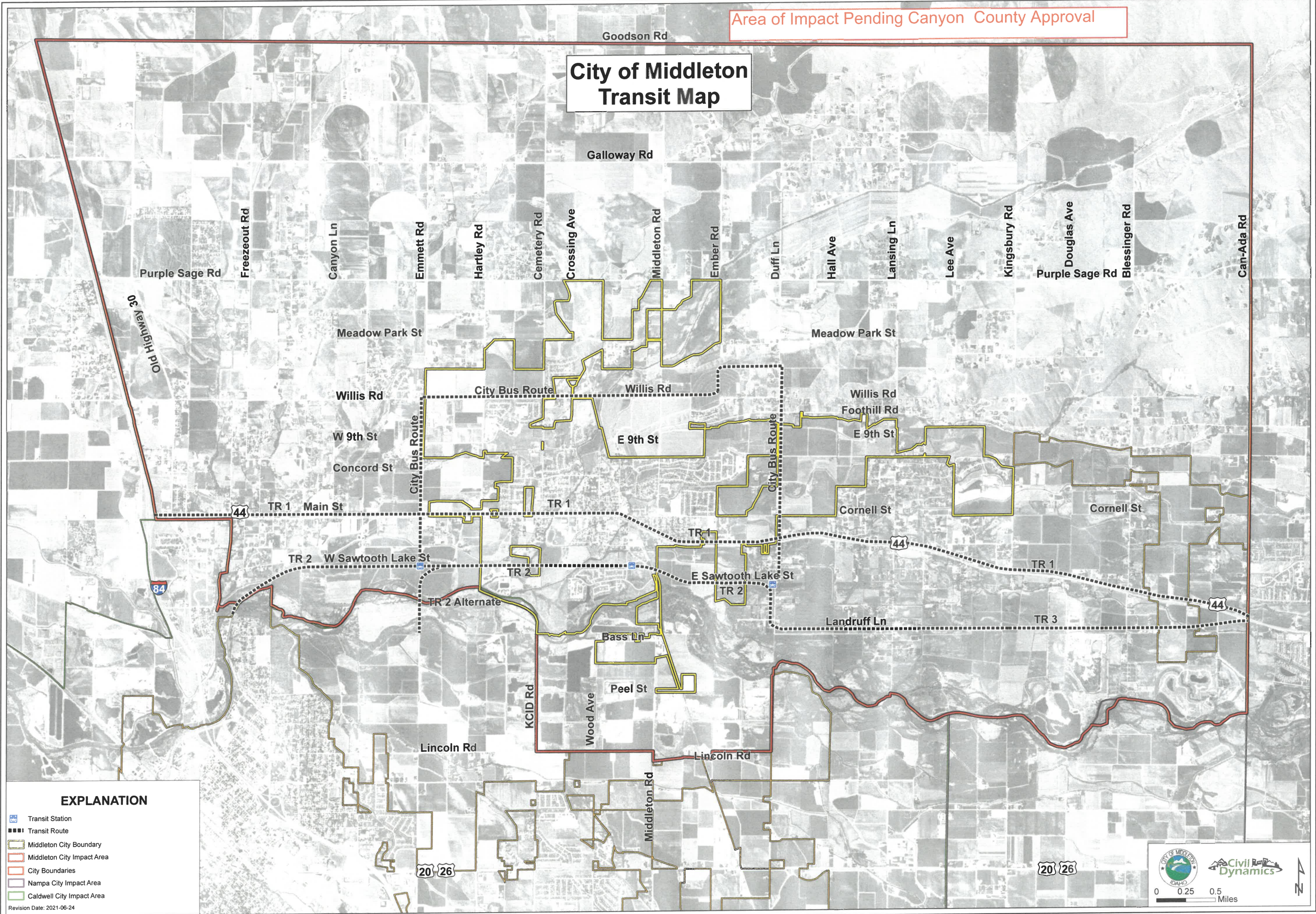
0 0.25 0.5 Miles

EXHIBIT B

Current, proposed and alternate Transit Map

Area of Impact Pending Canyon County Approval

# City of Middleton Transit Map



**EXPLANATION**

- Transit Station
- Transit Route
- Middleton City Boundary
- Middleton City Impact Area
- City Boundaries
- Nampa City Impact Area
- Caldwell City Impact Area

Revision Date: 2021-06-24

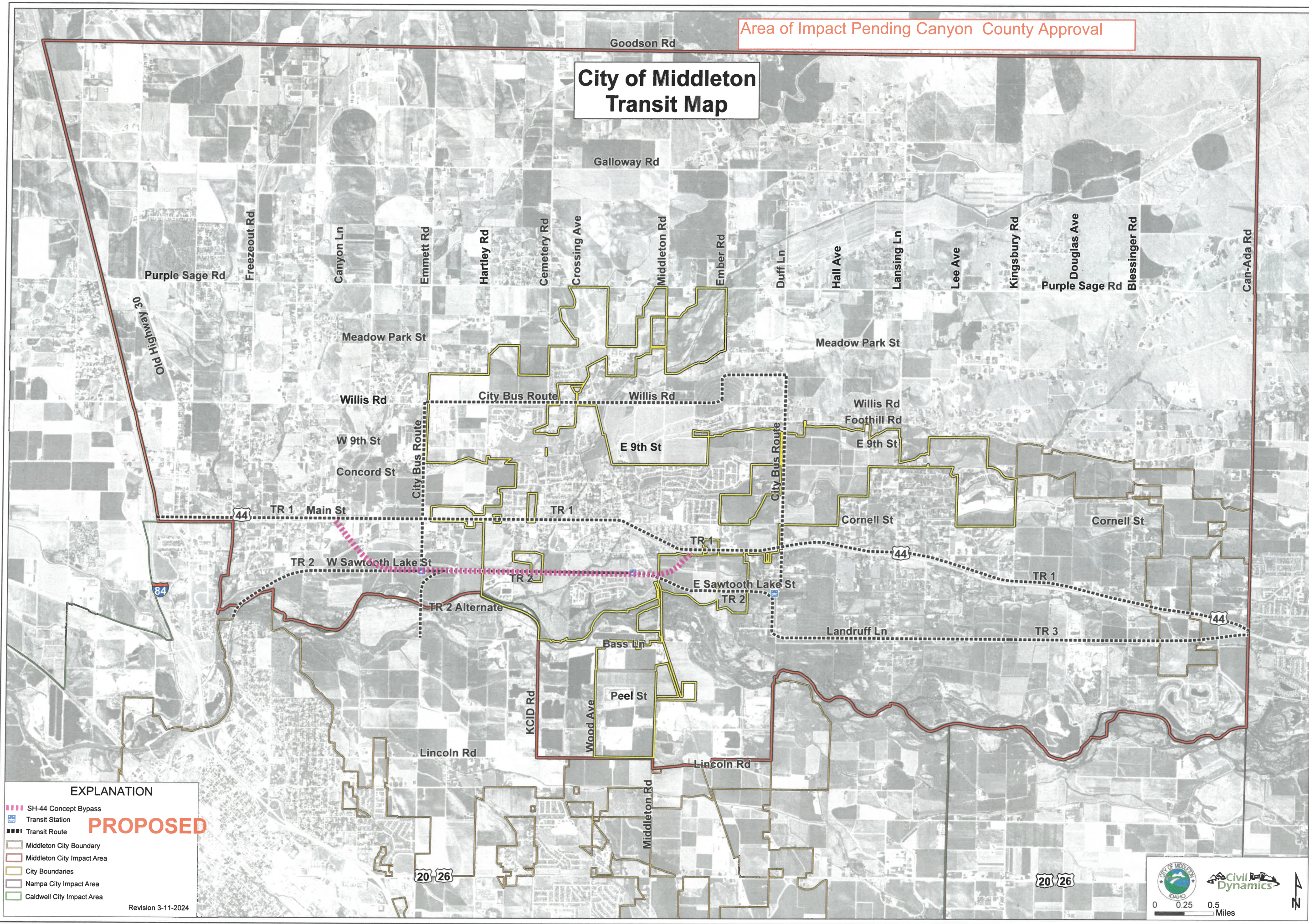



0 0.25 0.5 Miles



Area of Impact Pending Canyon County Approval

# City of Middleton Transit Map



### EXPLANATION

- SH-44 Concept Bypass
- Transit Station
- Transit Route
- Middleton City Boundary
- Middleton City Impact Area
- City Boundaries
- Nampa City Impact Area
- Caldwell City Impact Area

**PROPOSED**

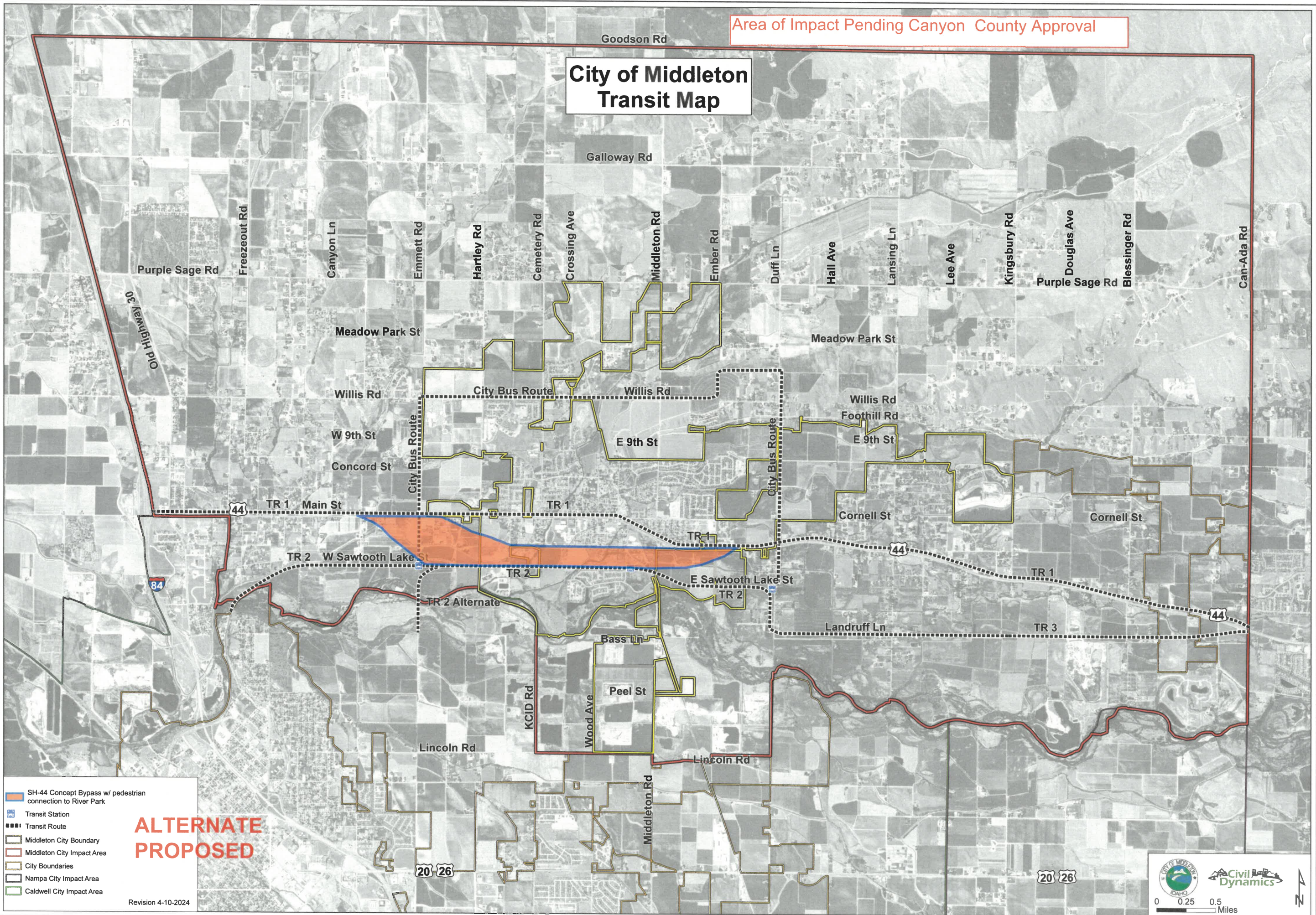
Revision 3-11-2024

0 0.25 0.5 Miles



Area of Impact Pending Canyon County Approval

# City of Middleton Transit Map



**ALTERNATE  
PROPOSED**

- SH-44 Concept Bypass w/ pedestrian connection to River Park
- Transit Station
- Transit Route
- Middleton City Boundary
- Middleton City Impact Area
- City Boundaries
- Nampa City Impact Area
- Caldwell City Impact Area

Revision 4-10-2024

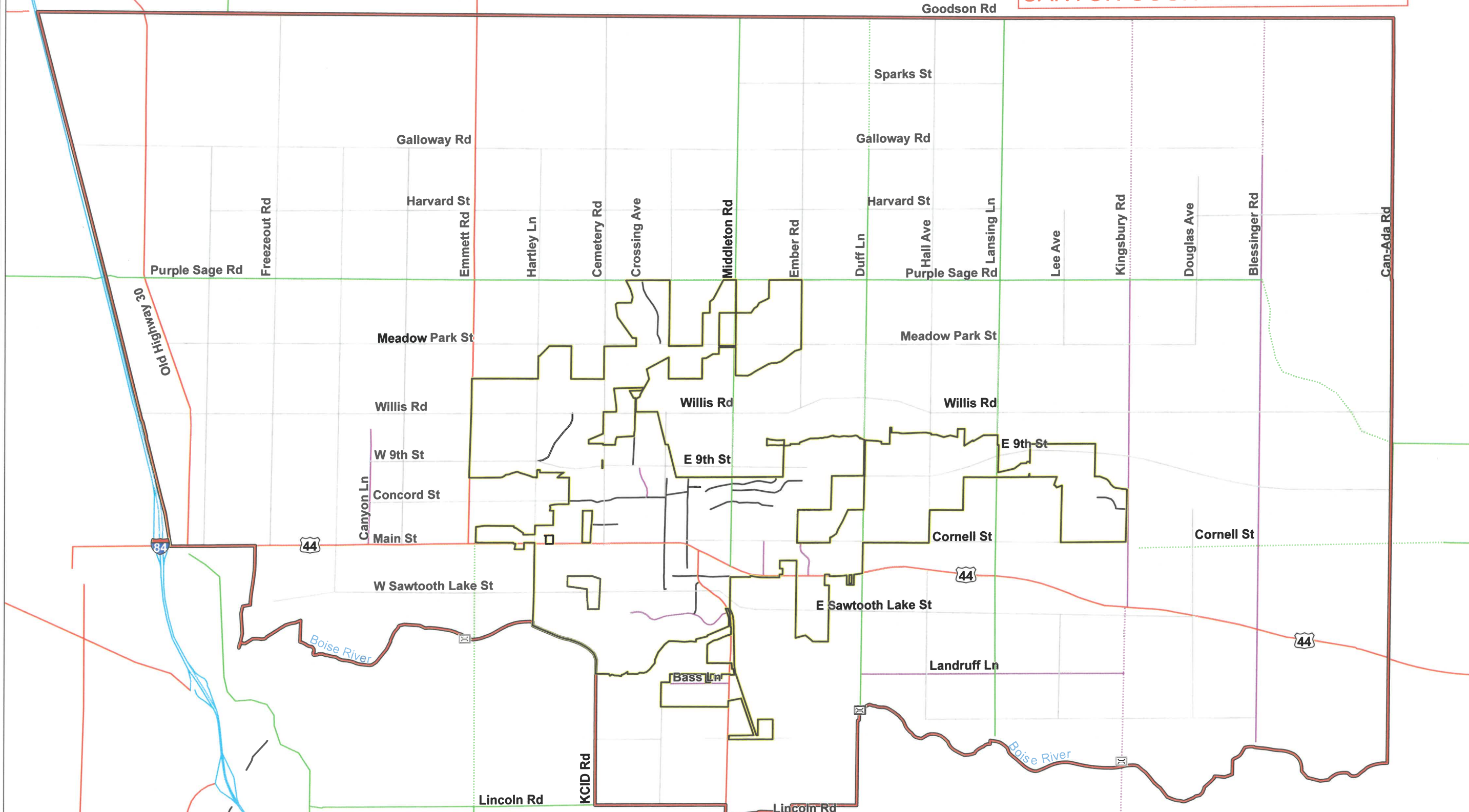
0 0.25 0.5 Miles

EXHIBIT C

Current, proposed and alternate Functional Classification Map

# City of Middleton Functional Classification Map

AREA OF IMPACT PENDING  
CANYON COUNTY APPROVAL



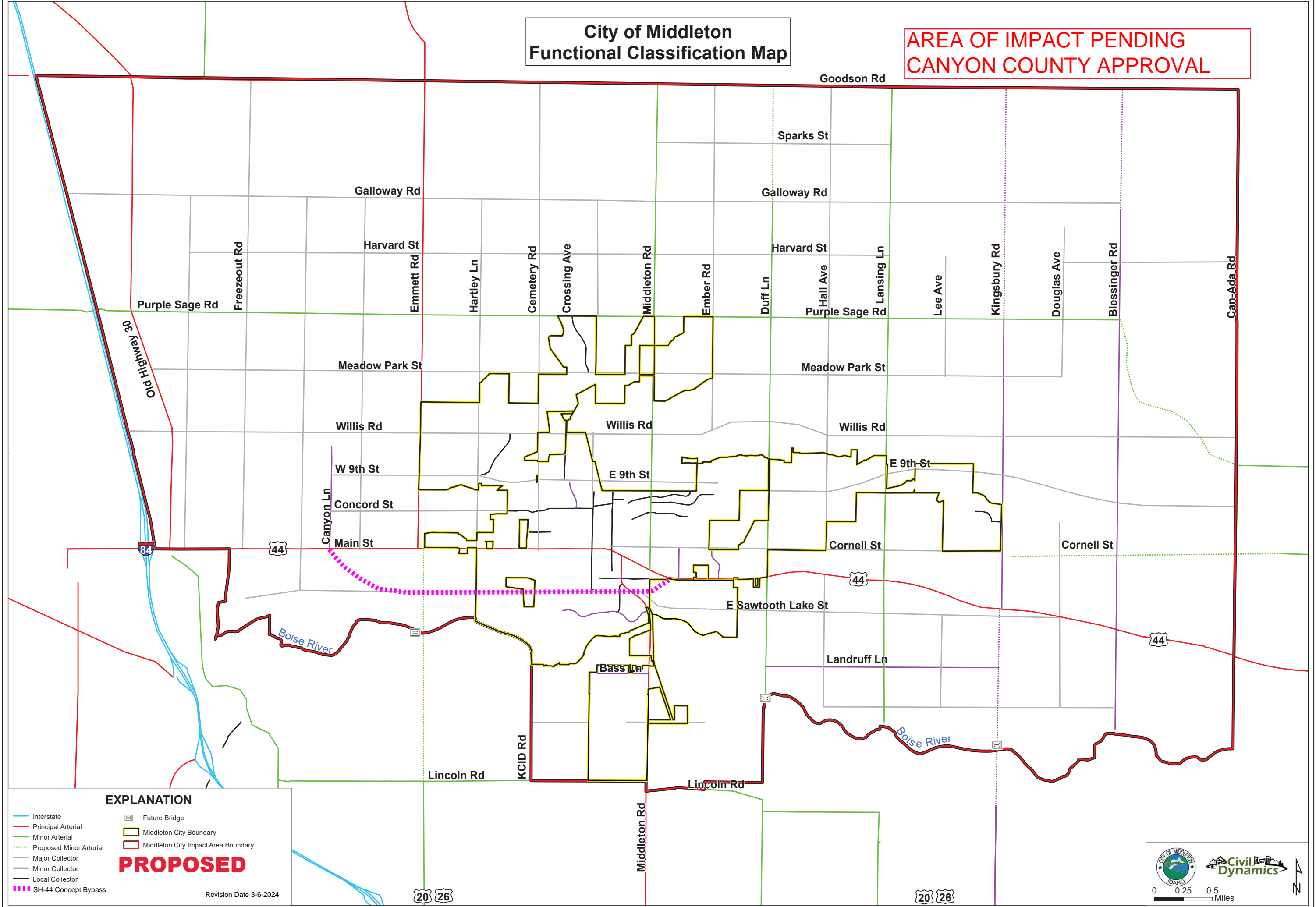
### EXPLANATION

- Interstate
- Principal Arterial
- Minor Arterial
- Proposed Minor Arterial
- Major Collector
- Minor Collector
- Local Collector
- Middleton City Boundary
- Middleton City Impact Area Boundary
- Future Bridge

Revision Date: 2021-06-25

# City of Middleton Functional Classification Map

**AREA OF IMPACT PENDING  
CANYON COUNTY APPROVAL**



### EXPLANATION

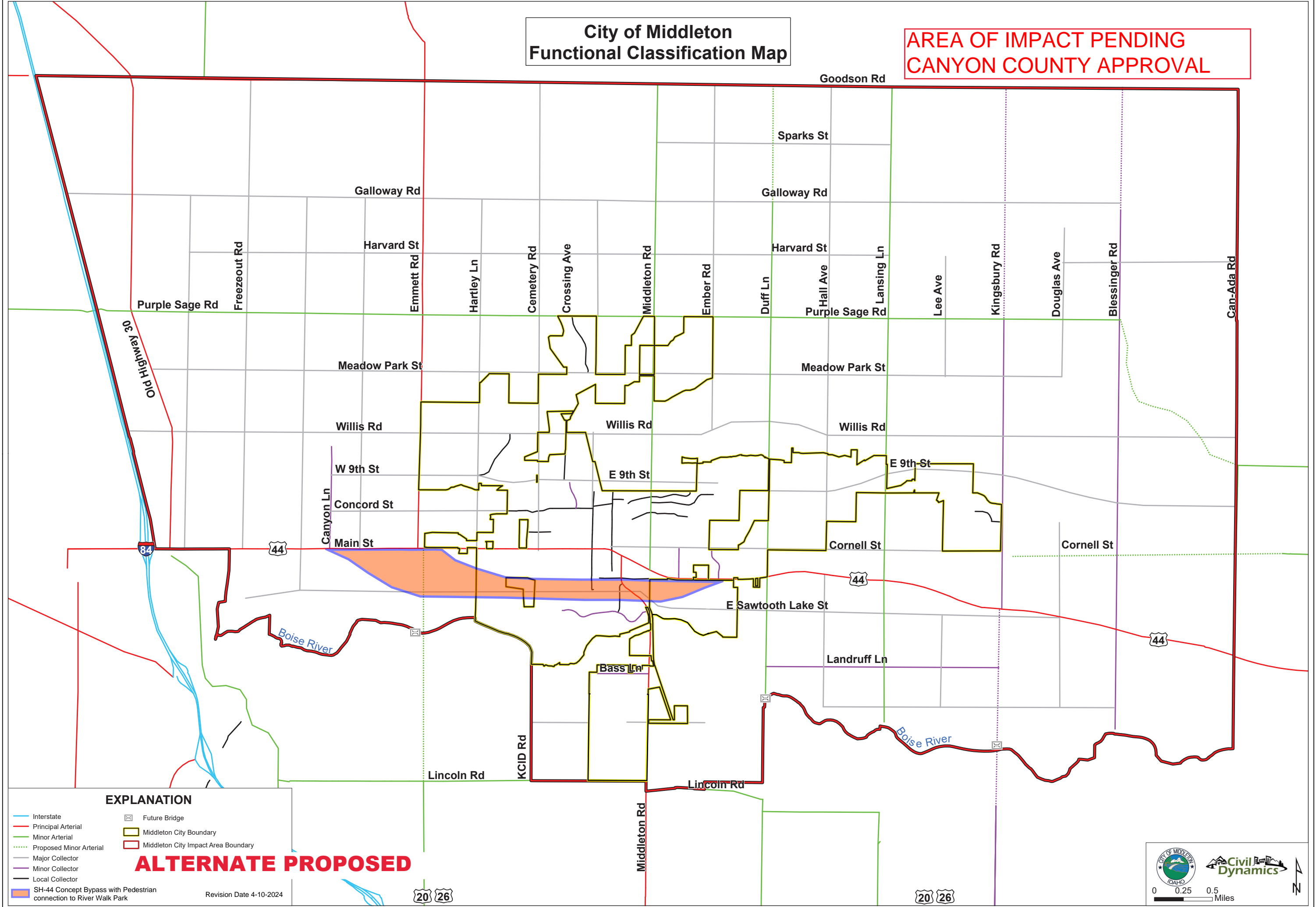
- Interstate
- Principal Arterial
- Minor Arterial
- Proposed Minor Arterial
- Major Collector
- Minor Collector
- Local Collector
- - - SH-44 Concept Bypass
- Future Bridge
- Middleton City Boundary
- Middleton City Impact Area Boundary

**PROPOSED**

Revision Date 3-6-2024

# City of Middleton Functional Classification Map

**AREA OF IMPACT PENDING  
CANYON COUNTY APPROVAL**



### EXPLANATION

- Interstate
- Principal Arterial
- Minor Arterial
- Proposed Minor Arterial
- Major Collector
- Minor Collector
- Local Collector
- SH-44 Concept Bypass with Pedestrian connection to River Walk Park
- Future Bridge
- Middleton City Boundary
- Middleton City Impact Area Boundary

**ALTERNATE PROPOSED**

Revision Date 4-10-2024

0 0.25 0.5 Miles

**20 26**

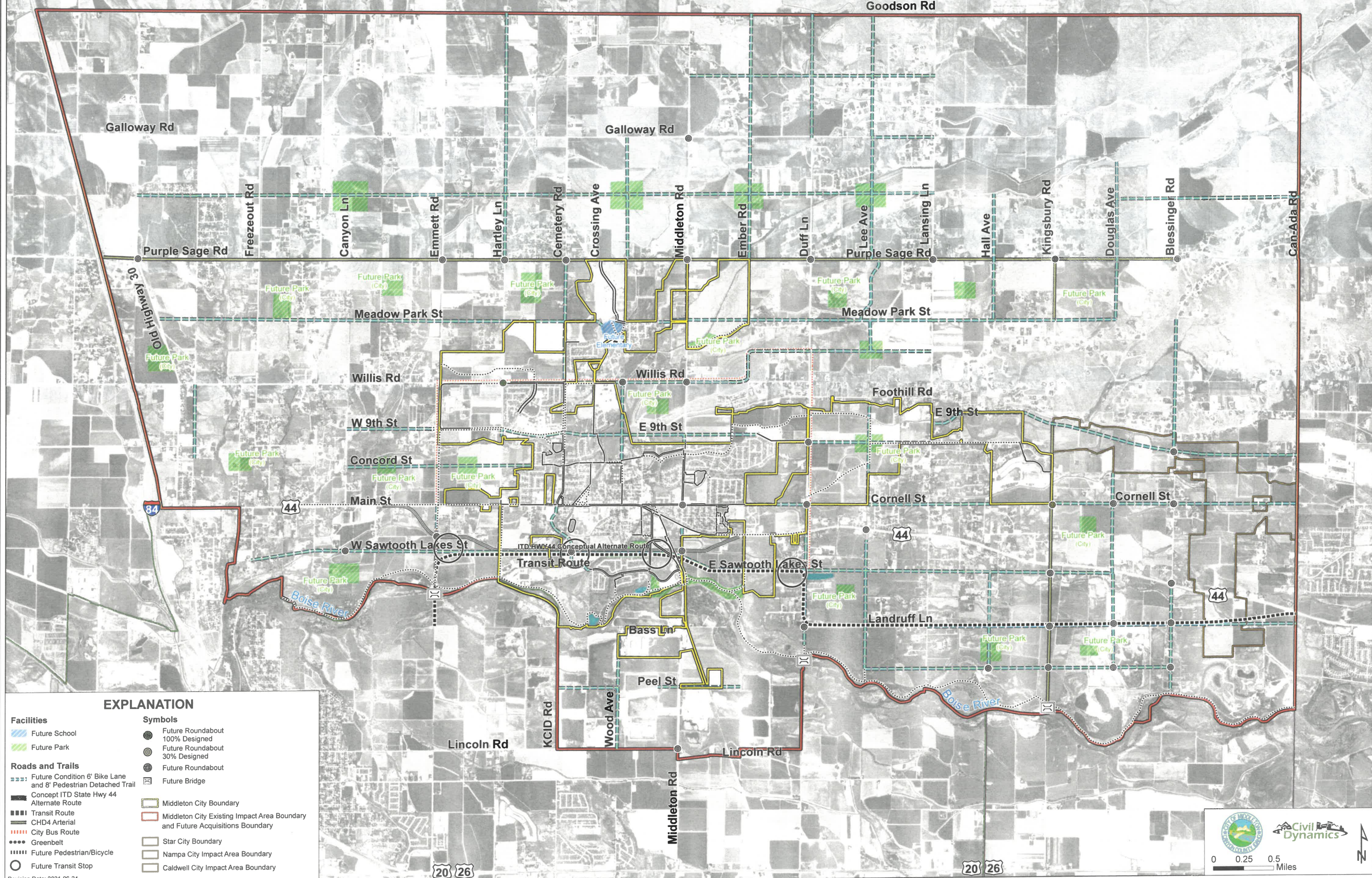
**20 26**

EXHIBIT D

Current, proposed and alternate Future Acquisitions Map

# City of Middleton Future Acquisitions Map

Area of Impact Pending Canyon County Approval.



## EXPLANATION

- |  |   |
|--|---|
| <b>Facilities</b>  | <b>Symbols</b>  |
| Future School  | Future Roundabout 100% Designed   |
| Future Park  | Future Roundabout 30% Designed  |
| <b>Roads and Trails</b>  | Future Roundabout   |
| Future Condition 6' Bike Lane and 8' Pedestrian Detached Trail | Future Bridge   |
| Concept ITD State Hwy 44 Alternate Route                       | Middleton City Boundary   |
| Transit Route  | Middleton City Existing Impact Area Boundary and Future Acquisitions Boundary |
| CHD4 Arterial  | Star City Boundary  |
| City Bus Route   | Nampa City Impact Area Boundary   |
| Greenbelt  | Caldwell City Impact Area Boundary  |
| Future Pedestrian/Bicycle                                      |   |
| Future Transit Stop  |   |

Revision Date: 2021-06-24

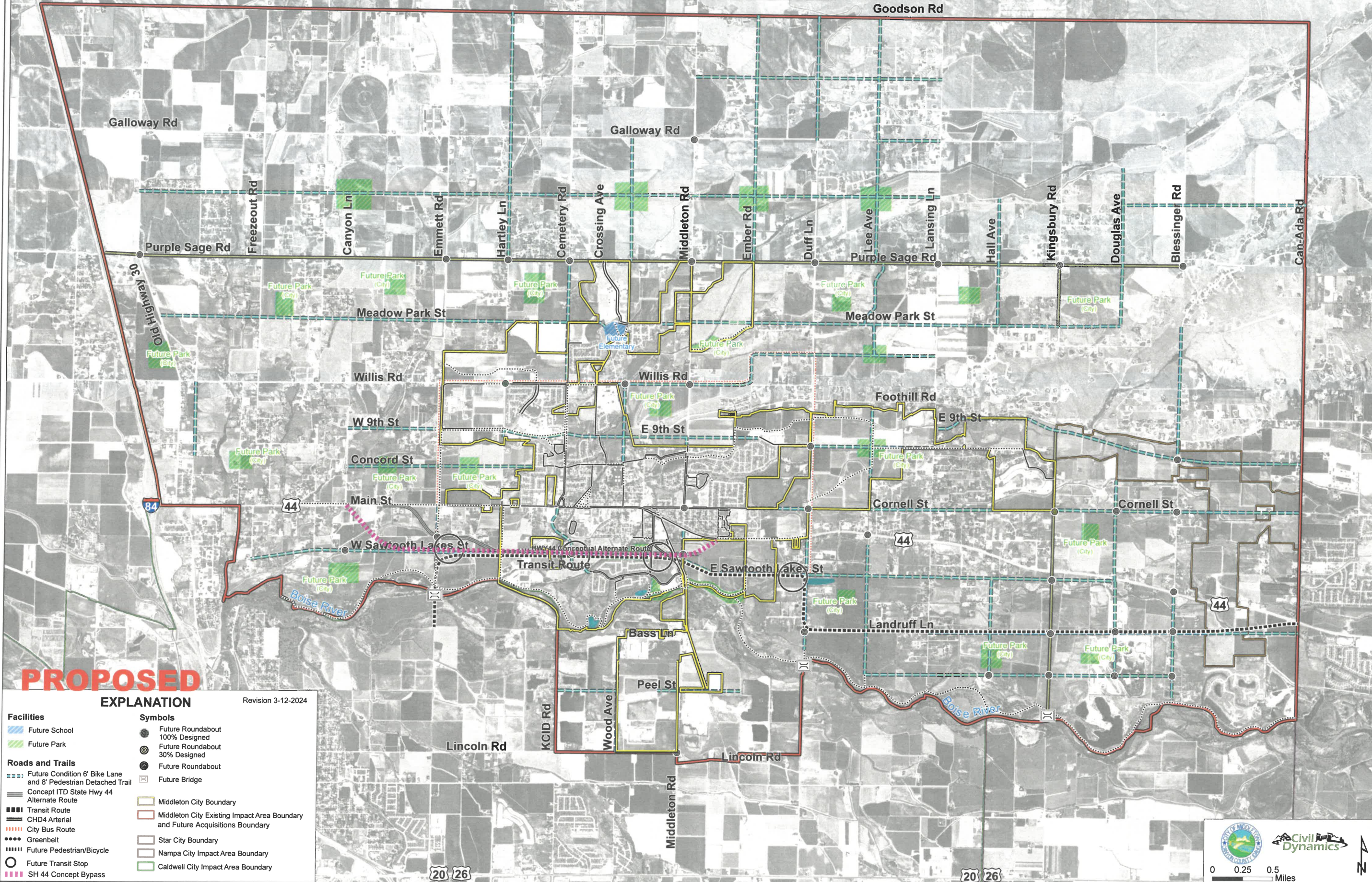
Civil Dynamics

0 0.25 0.5 Miles

North Arrow

# City of Middleton Future Acquisitions Map

Area of Impact Pending Canyon County Approval.



**PROPOSED**

## EXPLANATION

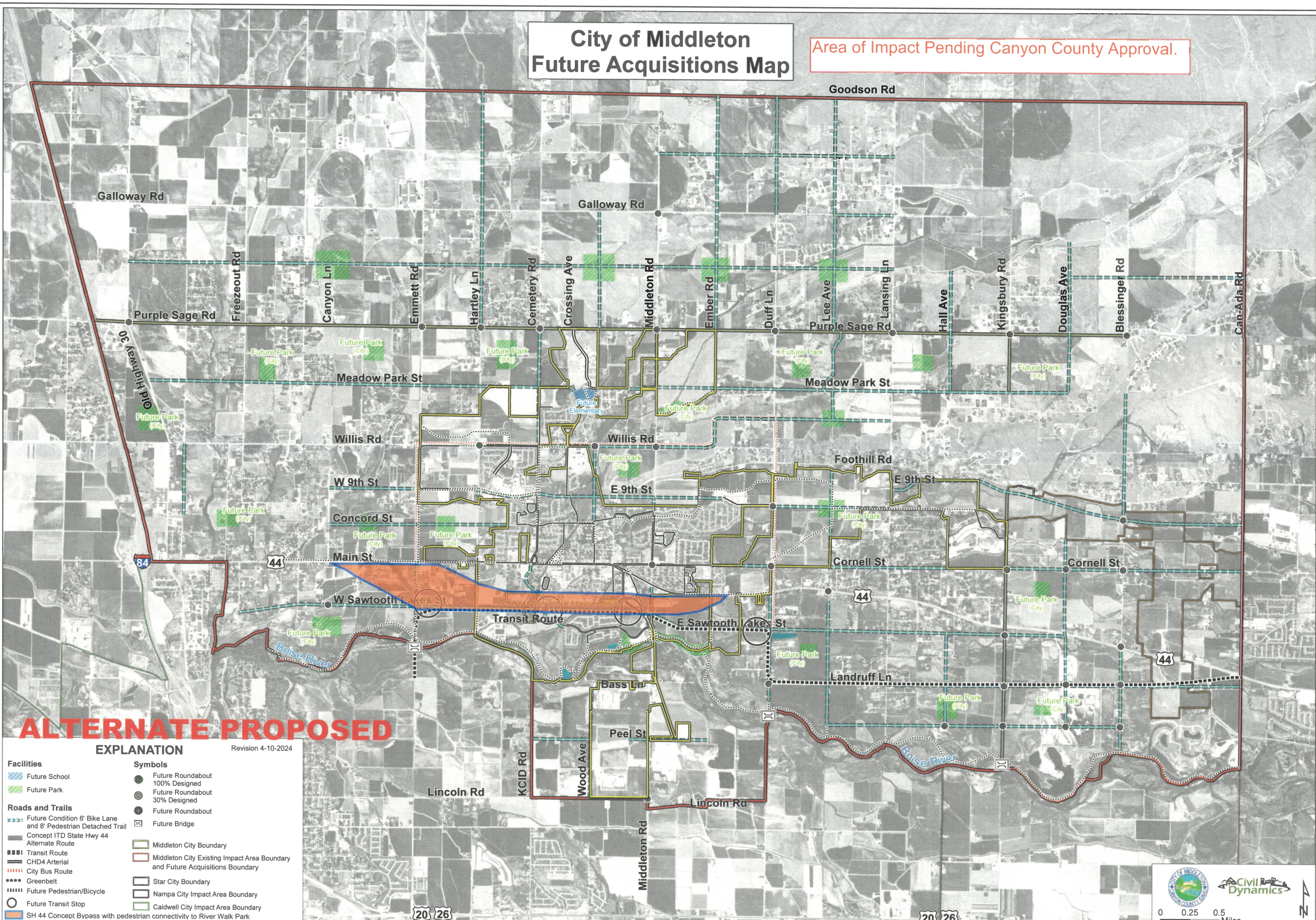
Revision 3-12-2024

Facilities	Symbols
Future School	Future Roundabout 100% Designed
Future Park	Future Roundabout 30% Designed
<b>Roads and Trails</b>	Future Roundabout
Future Condition 6' Bike Lane and 8' Pedestrian Detached Trail	Future Bridge
Concept ITD State Hwy 44 Alternate Route	Middleton City Boundary
Transit Route	Middleton City Existing Impact Area Boundary and Future Acquisitions Boundary
CHD4 Arterial	Star City Boundary
City Bus Route	Nampa City Impact Area Boundary
Greenbelt	Caldwell City Impact Area Boundary
Future Pedestrian/Bicycle	
Future Transit Stop	
SH 44 Concept Bypass	



# City of Middleton Future Acquisitions Map

Area of Impact Pending Canyon County Approval.



**ALTERNATE PROPOSED**

**EXPLANATION** Revision 4-10-2024

- |  |   |
|--|---|
| <b>Facilities</b>  | <b>Symbols</b>  |
| Future School  | Future Roundabout 100% Designed   |
| Future Park  | Future Roundabout 30% Designed  |
| <b>Roads and Trails</b>  | Future Roundabout   |
| Future Condition 6' Bike Lane and 8' Pedestrian Detached Trail       | Future Bridge   |
| Concept ITD State Hwy 44 Alternate Route                             | Middleton City Boundary   |
| Transit Route  | Middleton City Existing Impact Area Boundary and Future Acquisitions Boundary |
| CHD4 Arterial  | Star City Boundary  |
| City Bus Route   | Nampa City Impact Area Boundary   |
| Greenbelt  | Caldwell City Impact Area Boundary  |
| Future Pedestrian/Bicycle  |   |
| Future Transit Stop  |   |
| SH 44 Concept Bypass with pedestrian connectivity to River Walk Park |   |